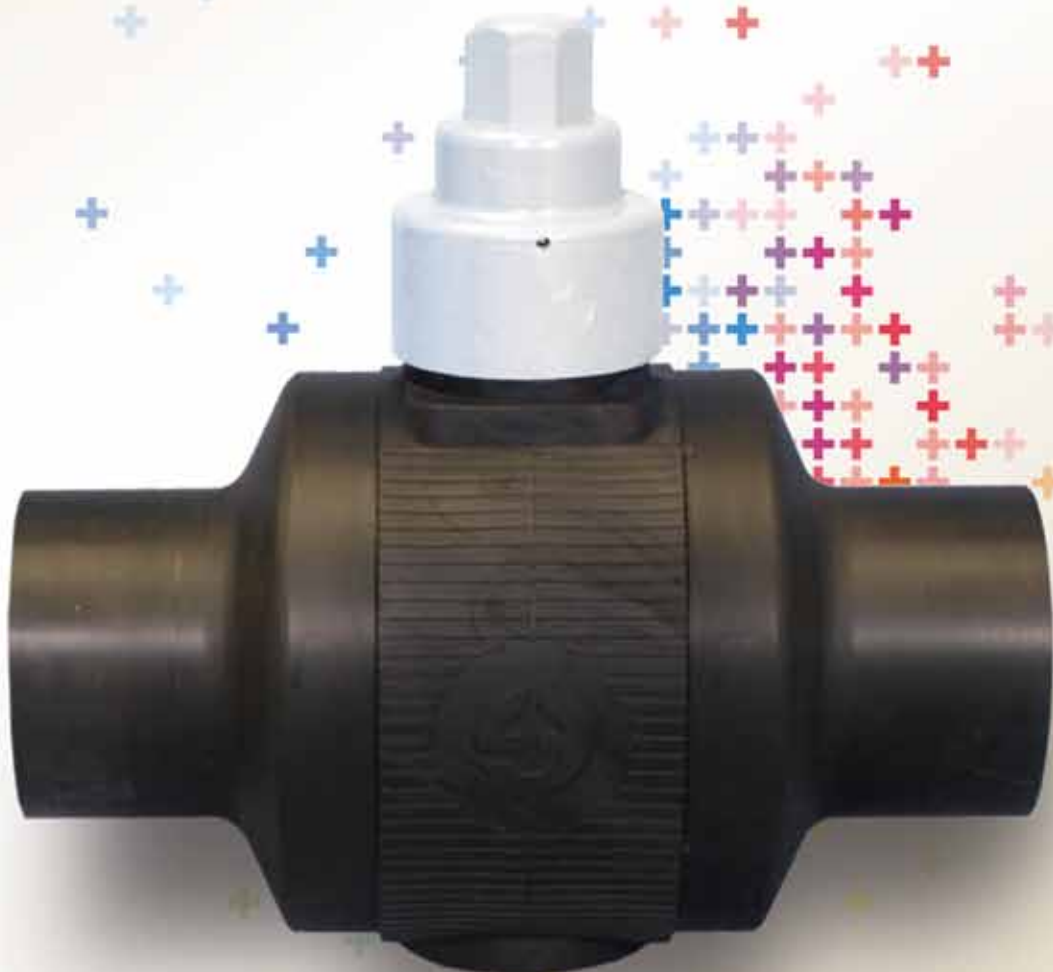
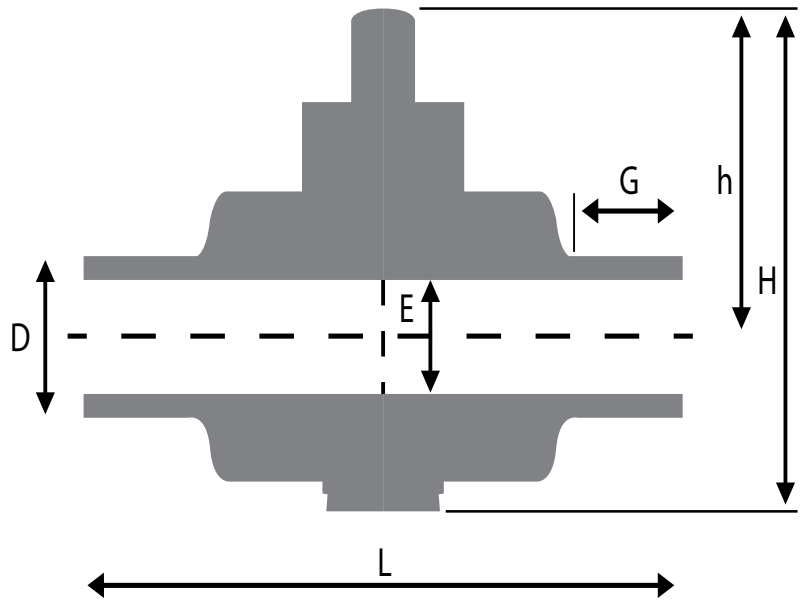


# Full Port Polyethylene Ball Valve



Backed by the leader in pipe joining products & solutions.



SIZE	D	E (Min)	G	h	H	L	Weight (lbs)
1 1/4" IPS	1.66"	1.32	2.75"	4.75"	7.125"	12.60"	2.99
2" IPS	2.375"	1.904	3.15"	5.70"	8.50"	14.00"	4.62
3" IPS	3.5"	2.805	3.15"	7.90"	11.50"	14.00"	7.45
4" IPS	4.5"	3.625	4.50"	11.15"	16.00"	20.35"	21.485
6" IPS	6.625"	5.343	3.60"	12.50"	18.50"	20.00"	37.47
8" IPS	8.625"	6.961	5.90"	16.00"	24.00"	27.50"	95.57
10" IPS	10.750"	8.681	5.35"	15.55" / *23"	25.75" / *33"	27.00"	108.02
12" IPS	12.750"	10.293	5.35"	15.55" / *23"	25.75" / *33"	27.00"	115.08

\*with gear actuation

All plastic, corrosion-free construction with bi-directional sealing system.

## PE3408/PE4710/PE100 HDPE

Developed by Georg Fischer Central Plastics, the trunnion pin design uses an additional lower support to retain the ball in a centralized position, eliminating the binding that can take place under pressure, and significantly reducing the torque required to operate the valve. The trunnion pin feature is available in 8", 10" and 12" sizes. On the 10" and 12" valves, a gear reduction actuator system further reduces the force needed to open and close the valve.

Georg Fischer Central Plastics offers a full range of PE ball valves in sizes 1-1/4" through 12". All valves are full port relative to the ID of the pipe to maximize flow.

Installation of the ball valve can be through butt fusion or electrofusion couplings to ensure a leak-free path. These valves can also be modified to include either PE3408/PE4710 or PE2406/PE2708 pups, if desired.

Mechanical fittings can also be used but certain restrictions may apply in gas applications. Our trunnion-style ball valves are pressure rated to at least an equivalent of DR11 pipe using the appropriate design safety factor (DSF) for the intended application.



## APPLICATIONS

### Gas Distribution

Pressure rated up to 100 PSI  
Meets ASTM D2513 requirements for natural gas applications

### Water & Waste Water

Pressure rated up to 200 PSI for water applications

### Industrial

- Irrigation
- Highly surge resistant HDPE materials
- Process piping
- Non-corrosive and chemical resistant

### Geothermal

Header and return systems

## FEATURES

All plastic, corrosion-free construction with bi-directional sealing system

Temperature rated from -20°F to 140°F

Permanently marked for fully traceable production information

Easy identification of open/closed position

Captured dual sealing/wiping element prevents debris build-up. Superior to o-ring style seal

Weather seal under actuator prevents dirt and debris from hindering actuator movement

## SPECIFICATIONS

Available in 1-1/4" through 12" sizes  
Trunnion pin design available in 8", 10", and 12" sizes eliminates pressure binding

Gear reduction system on 10" and 12" valves reduces torque required

Full port

Butt fusion or electrofusion installation

All valves can be operated with a 2" valve key



**GEORG FISCHER**  
PIPING SYSTEMS

## **GEORG FISCHER CENTRAL PLASTICS**

To build quality piping systems that are efficient, reliable and safe, you need piping systems, products and solutions with unparalleled integrity.

Georg Fischer Central Plastics is a global leader, supplying some of the top utilities and corporations around the world.

### **PIPING SYSTEMS, PRODUCTS & SOLUTIONS WITH INTEGRITY**

#### **Oklahoma - Head Office**

39605 Independence  
Shawnee, OK 74804

#### **Texas**

4949 Joseph Hardin Drive  
Dallas, TX 75236

**1.800.654.3872**

[gfcp.com](http://gfcp.com)

**Gas | Water & Waste Water | Energy | Industrial**