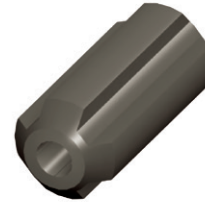

PRODUCT SPECIFICATIONS SHEET
ROD GUIDES

FEATURES AND BENEFITS**Full 360° Gripping Action**

- No Slippage, more pounds per square inch of holding power
- No Rod Whippage, less stress on pump and rods

Straight Line Flow

- Less Flow Restriction, provides maximum fluid by-pass
- Does not redirect potentially abrasive fluids onto rods or tubing

Large Surface Area

- Wearability, continuous strength as guides become worn
- Less maintenance between pump service
- Longer not and tubing life, better stabilization and less pump strain

Internal Ribs

- Internal Ribs
- Prevents rod corrosion, allows rust inhibitors to flow behind the guide
- High strength ribs compress to the rod to compensate for varying rod dimension tolerances for continuous holding power

Long Life Capron Material

- Excellent strength characteristics, low notch sensitivity and high abrasion resistance
- Chemical resistance, unaffected by crude, paraffin, acid inhibitors and other well fluids
- Tough, will not alter its characteristics between -20°F and +160°F
- Returns to original holding strength after hot oiling

Size	Part Number	Carton Qty.
5/8" x 2"	001-580000-000	35
3/4" x 2"	001-340000-000	35
7/8" x 2"	001-780000-000	35
5/8" x 2-1/2"	001-258000-000	25
3/4" x 2-1/2"	001-234000-000	25
7/8" x 2-1/2"	001-278000-000	25
1" x 2-1/2"	001-200000-000	25