

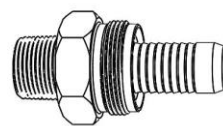


SurSeal® Service Head Adapter Riser

GF Piping Systems is happy to introduce the latest addition to the GF line of gas products: the SurSeal® Service Head Adapter Riser.

Features and Benefits

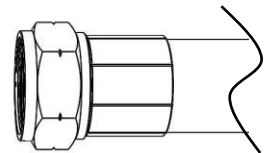
- SurSeal service head risers feature a positive stop nut design; eliminating the need for torque requirements
- Easily assembled onsite with a pipe or adjustable wrench
- The molded rubber gasket forces cold flow of plastic tubing for unmatched holding force
- One solid service line from main to above ground connection
- Eliminates underground connections
- Self-aligning integral grooved stiffener



Service Head Adapter



Gasket



Swivel Riser Nut

Requirements

ASTM D2513, ASTM F2509, ASTM F1948, DOT/CFR Part 192 and ANSI B1-20.1

Certification: IAPMO

Reference Documents: NFPA 58, PPI TR-19, ANSI B31.8 and UL 360

SurSeal® Service Head Adapter Riser

Stab Depth Chart

| PIPE SIZE | STAB DEPTH | WALL |
|-----------|------------|-----------------|
| 1/2 CTS | 7/8" | 0.090" |
| 3/4 IPS | 1" | DR11 |
| 1 CTS | 1" | 0.099" / 0.102" |
| 1 IPS | 1-1/4" | DR11 |
| 1-1/4 IPS | 1-1/4" | DR10 |
| 1-1/4 IPS | 1-1/4" | DR11 |
| 1-1/2 IPS | 1-3/8" | DR11 |
| 2 IPS | 1-1/2" | DR11 |

| PART NUMBER | DESCRIPTION |
|-------------|---|
| 360092824 | SHA RISER,FLEX,0.5,MPT,0.5,CTS,.090 |
| 360063044 | SHA RISER,FLEX,0.75,MPT,0.5,CTS,.090 |
| 360063045 | SHA RISER,FLEX,0.75,MPT,0.75,IPS,DR11 |
| 360063047 | SHA RISER,FLEX,0.75,MPT,1,CTS,.099/.102 |
| 360063046 | SHA RISER,FLEX,1,MPT,0.75,IPS,DR11 |
| 360063048 | SHA RISER,FLEX,1,MPT,1,CTS,.099/.102 |

COMING SOON...

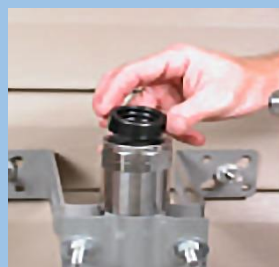
| |
|---------------------------------------|
| SHA RISER,FLEX,1,MPT,1,IPS,DR11 |
| SHA RISER,FLEX,1.25,MPT,1.25,IPS,DR11 |
| SHA RISER,FLEX,1.25,MPT,1.25,IPS,DR10 |
| SHA RISER,FLEX,1.5,MPT,1.5,IPS,DR11 |
| SHA RISER,FLEX,2,MPT,2,IPS,DR11 |

Additional flex lengths and sizes available upon request

Installation Instructions



1. Remove body/stiffener from the nut.



2. Remove the gasket.



3. Insert the plastic tubing through the moisture seal at the opposite end of the riser casing. Allow the tubing to extend at least 4" past the nut.



4. The pipe end should be cut squarely.



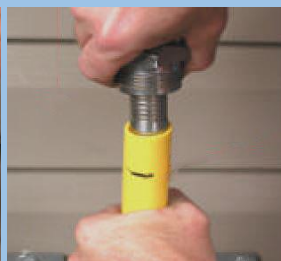
5. Remove burrs from pipe O.D. and I.D. Clean pipe thoroughly to ensure there is no dirt, grease, oil, or other contaminants on the assembly area.



6. Measure and mark the correct stab depth length on the plastic tubing (see stab depth chart above). Make sure not to scratch or damage the surface of the tubing.



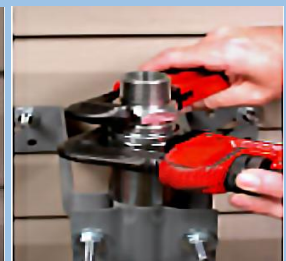
7. Ensure the gasket is free of debris and slide it over the plastic tubing and into the nut. Make sure the gasket is securely seated in the nut.



8. Stab the stiffener into the plastic tubing until the stab depth mark has been reached. The plastic tubing should bottom out inside the body.



9. With the body/stiffener assembly positioned in the plastic tubing, force the tubing down into the riser casing until the SHA body and nut are in contact.



10. Using two wrenches for assistance, tighten until the SHA body bottoms out against the nut.

Warning: Failure to insert PE pipe fully into the body of this fitting could allow PE pipe to become disengaged from the fitting and allow gas to leak. Failure to tighten the compression nut completely could allow PE pipe to become disengaged from the fitting and allow gas to leak. **GAS LEAKS CAN RESULT IN FIRE OR EXPLOSION.**

GF Central Plastics, LLC

39605 Independence | Shawnee, OK 74804

Tel. (405) 273-6302 | (800) 654-3872 | Fax. (800) 733-5993 | email: GFCentral.ps@georgfischer.com | www.centralplastics.com