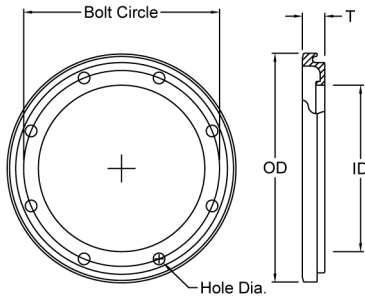


Flange Backup Rings

IPS Flange Backup Rings - Ductile Iron



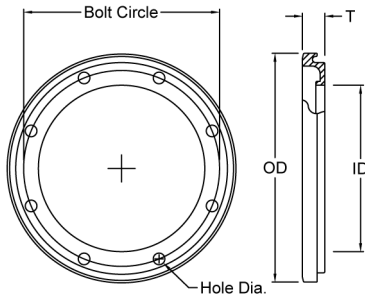
- Designed Specifically for use with HDPE Flange Adapters
- Approvals: ASME/ANSI B16.5, B16.47 Ser.A, CL150, B16.1, CL125, AWWA C207 (B/D/E)

Size [inch]	Part No.	T [inch]	OD [inch]	ID [inch]	Bolt Circle [inch]	Hole Dia. [inch]	# of Holes	WPR [psi]	Weight (lbs)
3/4		0.53	3.88	1.11	2.75	5/8	4	335	1.0
1		0.53	4.25	1.38	3.13	5/8	4	335	1.2
1-1/4		0.63	4.63	1.72	3.50	5/8	4	335	1.5
1-1/2		0.69	5.00	1.97	3.88	5/8	4	335	1.6
2		0.75	6.00	2.50	4.69	3/4	4	335	2.7
3		0.94	7.50	3.63	6.00	3/4	4	335	4.5
4		0.94	9.00	4.63	7.50	3/4	8	335	5.5
5		0.94	10.00	5.69	8.50	7/8	8	335	5.9
6		1.00	11.00	6.75	9.50	7/8	8	335	7.5
8		1.13	13.50	8.75	11.75	7/8	8	335	12.0
10		1.19	16.00	10.94	14.25	1	12	335	15.0
12		1.25	19.00	13.00	17.00	1	12	200	24.0
12		1.50	19.00	13.00	17.00	1	12	335	25.0
14		1.38	21.00	14.38	18.75	1-1/8	12	200	29.0
14		1.63	21.00	14.38	18.75	1-1/8	12	335	35.0
16		1.63	23.50	16.19	21.25	1-1/8	16	200	39.0
16		1.84	23.50	16.19	21.25	1-1/8	16	335	48.0
18		1.70	25.00	18.38	22.75	1-1/4	16	200	42.0
18		2.00	25.00	18.38	22.75	1-1/4	16	335	53.0
20		1.84	27.50	20.38	25.00	1-1/4	20	200	57.0
20		2.23	27.50	20.38	25.00	1-1/4	20	335	70.0
22		2.41	29.50	22.38	27.25	1-3/8	20	335	80.0
24		2.16	32.00	24.38	29.50	1-3/8	20	200	80.0
24		2.56	32.00	24.38	29.50	1-3/8	20	335	103.0
26		2.50	34.25	26.38	31.75	1-3/8	24	250	109.0
28		2.59	36.50	28.38	34.00	1-3/8	28	250	130.0
30		2.28	38.75	30.38	36.00	1-3/8	28	130	118.0
30		2.47	38.75	30.38	36.00	1-3/8	28	200	139.0
32		2.56	41.75	32.38	38.50	1-5/8	28	200	165.0
34		2.88	43.75	34.38	40.50	1-5/8	32	200	191.0
36		2.75	46.00	36.38	42.75	1-5/8	32	130	193.0
36		3.00	46.00	36.38	42.75	1-5/8	32	200	214.0
42		3.25	53.00	42.38	49.50	1-5/8	36	130	265.0
48		3.63	59.50	48.50	56.00	1-5/8	44	100	354.0
54		4.03	66.25	54.62	62.75	1-7/8	44	100	519.0

DIPS Flange Backup Rings - Ductile Iron

- Designed Specifically for use with HDPE Flange Adapters
- Approvals: ASME/ANSI B16.5, B16.47 Ser.A, CL150, B16.1, CL125, AWWA C207 (B/D/E)

Size [inch]	Part No.	T [inch]	OD [inch]	ID [inch]	Bolt Circle [inch]	Hole Dia. [inch]	# of Holes	WPR [psi]	Weight (lbs)
4		0.94	9.00	4.90	7.50	3/4	8	335	5
6		1.00	11.00	7.00	9.50	7/8	8	335	8
8		1.13	13.50	9.19	11.75	7/8	8	335	11
10		1.19	16.00	11.25	14.25	1	12	335	16
12		1.50	19.00	13.38	17.00	1	12	335	26
14		1.63	21.00	15.49	18.75	1-1/8	12	335	31
16		1.84	23.50	17.59	21.25	1-1/8	16	335	42
18		2.00	25.00	19.70	22.75	1-1/4	16	335	51
20		2.23	27.50	21.85	25.00	1-1/4	20	335	61
24		2.56	32.00	26.05	29.50	1-3/8	20	335	94
30		2.88	38.75	32.25	36.00	1-3/8	28	250	142

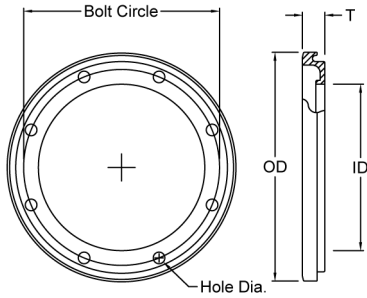


IPS Flange Backup Rings - Stainless Steel

- Designed Specifically for use with HDPE Flange Adapters
- Approvals: ASME/ANSI B16.5, B16.47 Ser.A, CL150, B16.1, CL125, AWWA C207 (B/D/E)

Size [inch]	Part No.	T [inch]	OD [inch]	ID [inch]	Bolt Circle [inch]	Hole Dia. [inch]	# of Holes	WPR [psi]	Weight (lbs)
2		0.75	6.00	2.50	4.69	3/4	4	335	2.6
3		0.94	7.50	3.63	6.00	3/4	4	335	4.8
4		0.94	9.00	4.63	7.50	3/4	8	335	5.9
6		1.00	11.00	6.75	9.50	7/8	8	335	8
8		1.13	13.50	8.75	11.75	7/8	8	335	13
10		1.19	16.00	10.94	14.25	1	12	335	16
12		1.50	19.00	13.00	17.00	1	12	335	27
14		1.38	21.00	14.38	18.75	1-1/8	12	200	31
16		1.63	23.50	16.38	21.25	1-1/8	16	200	42
18		1.70	25.00	18.38	22.75	1-1/4	16	200	46
20		1.84	27.50	20.38	25.00	1-1/4	20	200	58
22		2.41	29.50	22.38	27.25	1-3/8	20	335	69
24		2.16	32.00	24.38	29.50	1-3/8	20	250	87
26		2.50	34.25	26.38	31.75	1-3/8	24	250	N/A
28		2.59	36.50	28.38	34.00	1-3/8	28	250	N/A
30		2.47	38.75	30.38	36.00	1-3/8	28	200	N/A
32		2.56	41.75	32.38	38.50	1-5/8	28	200	N/A
34		2.88	43.75	34.38	40.50	1-5/8	32	200	N/A
36		2.75	46.00	36.38	42.75	1-5/8	32	200	N/A
42		3.25	53.00	42.38	49.50	1-5/8	36	130	N/A
48		3.63	59.50	48.50	56.00	1-5/8	44	100	N/A
54		4.03	66.25	54.62	62.75	1-7/8	44	100	N/A

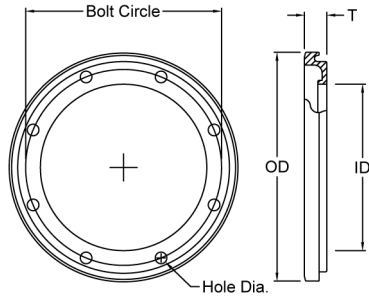
DIPS Flange Backup Rings - Stainless Steel



- Designed Specifically for use with HDPE Flange Adapters
- Approvals: ASME/ANSI B16.5, B16.47 Ser.A, CL150, B16.1, CL125, AWWA C207 (B/D/E)

Size [inch]	Part No.	T [inch]	OD [inch]	ID [inch]	Bolt Circle [inch]	Hole Dia. [inch]	# of Holes	WPR [psi]	Weight (lbs)
4		0.94	9.00	4.90	7.50	3/4	8	335	5.4
6		1.00	11.00	7.00	9.50	7/8	8	335	7.5
8		1.13	13.50	9.19	11.75	7/8	8	335	12
10		1.19	16.00	11.25	14.25	1	12	335	15
12		1.50	19.00	13.38	17.00	1	12	335	27
14		1.38	21.00	15.49	18.75	1-1/8	12	200	30
16		1.63	23.50	17.59	21.25	1-1/8	16	200	41
18		1.70	25.00	19.70	22.75	1-1/4	16	200	45
20		1.84	27.50	21.85	25.00	1-1/4	20	200	57
24		2.16	32.00	26.05	29.50	1-3/8	20	200	86

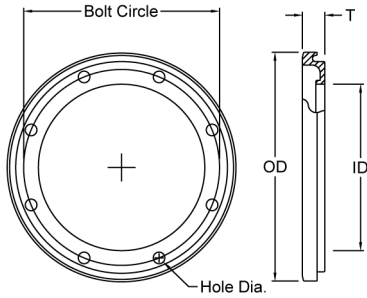
IPS Flange Backup Rings - Epoxy Coated



- Designed Specifically for use with HDPE Flange Adapters
- Approvals: ASME/ANSI B16.5, B16.47 Ser.A, CL150, B16.1, CL125, AWWA C207 (B/D/E)

Size [inch]	Part No.	T [inch]	OD [inch]	ID [inch]	Bolt Circle [inch]	Hole Dia. [inch]	# of Holes	WPR [psi]	Weight (lbs)
3/4		0.53	3.88	1.11	2.75	5/8	4	335	1.0
1		0.53	4.25	1.38	3.13	5/8	4	335	1.2
1-1/4		0.63	4.63	1.72	3.50	5/8	4	335	1.5
1-1/2		0.69	5.00	1.97	3.88	5/8	4	335	1.6
2		0.75	6.00	2.50	4.69	3/4	4	335	2.7
3		0.94	7.50	3.63	6.00	3/4	4	335	4.5
4		0.94	9.00	4.63	7.50	3/4	8	335	5.5
5		0.94	10.00	5.69	8.50	7/8	8	335	5.9
6		1.00	11.00	6.75	9.50	7/8	8	335	7.5
8		1.13	13.50	8.75	11.75	7/8	8	335	12.0
10		1.19	16.00	10.94	14.25	1	12	335	15.0
12		1.25	19.00	13.00	17.00	1	12	200	24.0
12		1.50	19.00	13.00	17.00	1	12	335	25.0
14		1.38	21.00	14.38	18.75	1-1/8	12	200	29.0
14		1.63	21.00	14.38	18.75	1-1/8	12	335	35.0
16		1.63	23.50	16.19	21.25	1-1/8	16	200	39.0
16		1.84	23.50	16.19	21.25	1-1/8	16	335	48.0
18		1.70	25.00	18.38	22.75	1-1/4	16	200	42.0
18		2.00	25.00	18.38	22.75	1-1/4	16	335	53.0
20		1.84	27.50	20.38	25.00	1-1/4	20	200	57.0
20		2.23	27.50	20.38	25.00	1-1/4	20	335	70.0
22		2.41	29.50	22.38	27.25	1-3/8	20	335	80.0
24		2.16	32.00	24.38	29.50	1-3/8	20	200	80.0
24		2.56	32.00	24.38	29.50	1-3/8	20	335	103.0
26		2.50	34.25	26.38	31.75	1-3/8	24	250	109.0
28		2.59	36.50	28.38	34.00	1-3/8	28	250	130.0
30		2.28	38.75	30.38	36.00	1-3/8	28	130	118.0
30		2.47	38.75	30.38	36.00	1-3/8	28	200	139.0
32		2.56	41.75	32.38	38.50	1-5/8	28	200	165.0
34		2.88	43.75	34.38	40.50	1-5/8	32	200	191.0
36		2.75	46.00	36.38	42.75	1-5/8	32	130	193.0
36		3.00	46.00	36.38	42.75	1-5/8	32	200	214.0
42		3.25	53.00	42.38	49.50	1-5/8	36	130	265.0
48		3.63	59.50	48.50	56.00	1-5/8	44	100	354.0
54		4.03	66.25	54.62	62.75	1-7/8	44	100	519.0

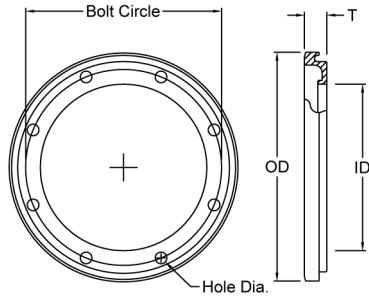
DIPS Flange Backup Rings - Epoxy Coated



- Designed Specifically for use with HDPE Flange Adapters
- Approvals: ASME/ANSI B16.5, B16.47 Ser.A, CL150, B16.1, CL125, AWWA C207 (B/D/E)

Size [inch]	Part No.	T [inch]	OD [inch]	ID [inch]	Bolt Circle [inch]	Hole Dia. [inch]	# of Holes	WPR [psi]	Weight (lbs)
4		0.94	9.00	4.90	7.50	3/4	8	335	5
6		1.00	11.00	7.00	9.50	7/8	8	335	8
8		1.13	13.50	9.19	11.75	7/8	8	335	11
10		1.19	16.00	11.25	14.25	1	12	335	16
12		1.50	19.00	13.38	17.00	1	12	335	26
14		1.63	21.00	15.49	18.75	1-1/8	12	335	31
16		1.84	23.50	17.59	21.25	1-1/8	16	335	42
18		2.00	25.00	19.70	22.75	1-1/4	16	335	51
20		2.23	27.50	21.85	25.00	1-1/4	20	335	61
24		2.56	32.00	26.05	29.50	1-3/8	20	335	94
30		2.88	38.75	32.25	36.00	1-3/8	28	250	142

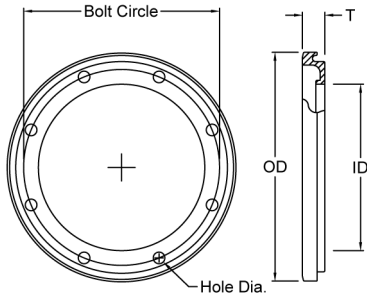
IPS Flange Backup Rings - Galvanized



- Designed Specifically for use with HDPE Flange Adapters
- Approvals: ASME/ANSI B16.5, B16.47 Ser.A, CL150, B16.1, CL125, AWWA C207 (B/D/E)

Size [inch]	Part No.	T [inch]	OD [inch]	ID [inch]	Bolt Circle [inch]	Hole Dia. [inch]	# of Holes	WPR [psi]	Weight (lbs)
3/4		0.53	3.88	1.11	2.75	5/8	4	335	1.0
1		0.53	4.25	1.38	3.13	5/8	4	335	1.2
1-1/4		0.63	4.63	1.72	3.50	5/8	4	335	1.5
1-1/2		0.69	5.00	1.97	3.88	5/8	4	335	1.6
2		0.75	6.00	2.50	4.69	3/4	4	335	2.7
3		0.94	7.50	3.63	6.00	3/4	4	335	4.5
4		0.94	9.00	4.63	7.50	3/4	8	335	5.5
5		0.94	10.00	5.69	8.50	7/8	8	335	5.9
6		1.00	11.00	6.75	9.50	7/8	8	335	7.5
8		1.13	13.50	8.75	11.75	7/8	8	335	12.0
10		1.19	16.00	10.94	14.25	1	12	335	15.0
12		1.25	19.00	13.00	17.00	1	12	200	24.0
12		1.50	19.00	13.00	17.00	1	12	335	25.0
14		1.38	21.00	14.38	18.75	1-1/8	12	200	29.0
14		1.63	21.00	14.38	18.75	1-1/8	12	335	35.0
16		1.63	23.50	16.19	21.25	1-1/8	16	200	39.0
16		1.84	23.50	16.19	21.25	1-1/8	16	335	48.0
18		1.70	25.00	18.38	22.75	1-1/4	16	200	42.0
18		2.00	25.00	18.38	22.75	1-1/4	16	335	53.0
20		1.84	27.50	20.38	25.00	1-1/4	20	200	57.0
20		2.23	27.50	20.38	25.00	1-1/4	20	335	70.0
22		2.41	29.50	22.38	27.25	1-3/8	20	335	80.0
24		2.16	32.00	24.38	29.50	1-3/8	20	200	80.0
24		2.56	32.00	24.38	29.50	1-3/8	20	335	103.0
26		2.50	34.25	26.38	31.75	1-3/8	24	250	109.0
28		2.59	36.50	28.38	34.00	1-3/8	28	250	130.0
30		2.28	38.75	30.38	36.00	1-3/8	28	130	118.0
30		2.47	38.75	30.38	36.00	1-3/8	28	200	139.0
32		2.56	41.75	32.38	38.50	1-5/8	28	200	165.0
34		2.88	43.75	34.38	40.50	1-5/8	32	200	191.0
36		2.75	46.00	36.38	42.75	1-5/8	32	130	193.0
36		3.00	46.00	36.38	42.75	1-5/8	32	200	214.0
42		3.25	53.00	42.38	49.50	1-5/8	36	130	265.0
48		3.63	59.50	48.50	56.00	1-5/8	44	100	354.0
54		4.03	66.25	54.62	62.75	1-7/8	44	100	519.0

DIPS Flange Backup Rings - Galvanized



- Designed Specifically for use with HDPE Flange Adapters
- Approvals: ASME/ANSI B16.5, B16.47 Ser.A, CL150, B16.1, CL125, AWWA C207 (B/D/E)

Size [inch]	Part No.	T [inch]	OD [inch]	ID [inch]	Bolt Circle [inch]	Hole Dia. [inch]	# of Holes	WPR [psi]	Weight (lbs)
4		0.94	9.00	4.90	7.50	3/4	8	335	5
6		1.00	11.00	7.00	9.50	7/8	8	335	8
8		1.13	13.50	9.19	11.75	7/8	8	335	11
10		1.19	16.00	11.25	14.25	1	12	335	16
12		1.50	19.00	13.38	17.00	1	12	335	26
14		1.63	21.00	15.49	18.75	1-1/8	12	335	31
16		1.84	23.50	17.59	21.25	1-1/8	16	335	42
18		2.00	25.00	19.70	22.75	1-1/4	16	335	51
20		2.23	27.50	21.85	25.00	1-1/4	20	335	61
24		2.56	32.00	26.05	29.50	1-3/8	20	335	94
30		2.88	38.75	32.25	36.00	1-3/8	28	250	142