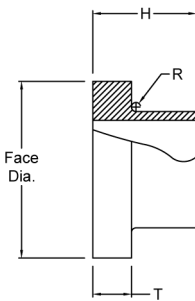


# Flange Adapters

## IPS Flange Adapters (SDR 7 - 335 psi)

Size [inch]	Part No.	H [inch]	T [inch]	Face Dia. [inch]	R (Radius)	Weight [lbs]
3/4		4.0	0.20	2.00	1/4	0.1
1		4.0	0.21	2.37	1/4	0.1
1-1/4		4.0	0.25	2.75	1/4	0.2
1-1/2		4.0	0.30	3.12	1/4	0.2
2		6.0	0.39	3.94	1/4	1
3		6.0	0.63	5.00	1/4	2
4		6.0	0.54	6.00	3/8	3
5		6.0	0.99	7.50	3/8	5
6		8.0	0.78	8.50	3/8	7
8		11.0	1.00	10.63	3/8	10
10		11.0	1.93	12.75	3/8	20
12		11.0	2.28	15.00	3/8	26
14		11.0	2.50	17.50	1/2	51
16		12.0	2.86	20.00	1/2	76
18		12.7	3.21	21.12	1/2	80
20		12.8	3.57	23.50	1/2	94

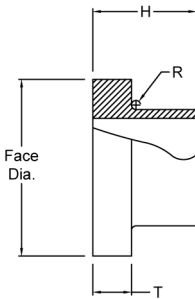


## IPS Flange Adapters (SDR 9 - 250 psi)

Size [inch]	Part No.	H [inch]	T [inch]	Face Dia.	R (Radius)	Weight [lbs]
3/4		4.0	0.20	2.00	1/4	0.1
1		4.0	0.21	2.37	1/4	0.1
1-1/4		4.0	0.25	2.75	1/4	0.2
1-1/2		4.0	0.30	3.12	1/4	0.2
2		6.0	0.39	3.94	1/4	1
3		6.0	0.63	5.00	1/4	2
4		6.0	0.54	6.00	3/8	3
5		6.0	0.99	7.50	3/8	5
6		8.0	0.78	8.50	3/8	7
8		11.0	1.00	10.63	3/8	10
10		11.0	1.49	12.75	3/8	19
12		11.0	1.77	15.00	3/8	25
14		11.0	1.94	17.50	1/2	49
16		12.0	2.22	20.00	1/2	74
18		12.0	2.50	21.12	1/2	79
20		12.0	2.78	23.50	1/2	81
22		12.0	3.06	25.60	1/2	83
24		14.0	3.33	28.00	1/2	97
26		15.0	3.61	30.00	1/2	143
28		15.7	3.89	32.30	1/2	158
30		15.8	4.17	34.30	1/2	164
32		15.8	4.44	36.50	1/2	186

## IPS Flange Adapters (SDR 11 - 200 psi)

Size [inch]	Part No.	H [inch]	T [inch]	Face Dia. [inch]	R (Radius)	Weight [lbs]
3/4		4.0	0.20	2.00	1/4	0.1
1		4.0	0.21	2.37	1/4	0.1
1-1/4		4.0	0.25	2.75	1/4	0.2
1-1/2		4.0	0.30	3.12	1/4	0.2
2		6.0	0.39	3.94	1/4	1
3		6.0	0.63	5.00	1/4	2
4		6.0	0.54	6.00	3/8	3
5		6.0	0.99	7.50	3/8	5
6		8.0	0.78	8.50	3/8	7
8		11.0	1.00	10.63	3/8	10
10		11.0	1.22	12.75	3/8	18
12		11.0	1.45	15.00	3/8	24
14		11.0	1.60	17.50	1/2	40
16		12.0	1.82	20.00	1/2	60
18		12.0	2.05	21.12	1/2	64
20		12.0	2.27	23.50	1/2	66
22		12.0	2.50	25.60	1/2	68
24		14.0	2.73	28.00	1/2	79
26		15.0	2.96	30.00	1/2	117
28		15.0	3.18	32.30	1/2	129
30		15.0	3.41	34.30	1/2	134
32		15.0	3.64	36.50	1/2	163
34		15.9	4.72	38.50	1/2	208
36		16.5	4.09	40.80	1/2	218

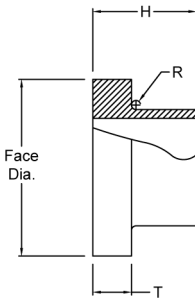


## IPS Flange Adapters (SDR 13.5 - 160 psi)

Size [inch]	Part No.	H [inch]	T [inch]	Face Dia. [inch]	R (Radius)	Weight [lbs]
2		6.0	0.39	3.94	1/4	1
3		6.0	0.63	5.00	1/4	2
4		6.0	0.54	6.00	3/8	3
5		6.0	0.99	7.50	3/8	5
6		8.0	0.78	8.50	3/8	7
8		11.0	1.00	10.63	3/8	10
10		11.0	1.22	12.75	3/8	18
12		11.0	1.45	15.00	3/8	24
14		11.0	1.60	17.50	1/2	40
16		12.0	1.82	20.00	1/2	60
18		12.0	2.05	21.12	1/2	64
20		12.0	2.27	23.50	1/2	66
22		12.0	2.50	25.60	1/2	68
24		14.0	2.73	28.00	1/2	79
26		15.0	2.96	30.00	1/2	117
28		15.0	3.18	32.30	1/2	129
30		15.0	3.41	34.30	1/2	134
32		15.0	3.64	36.50	1/2	163
34		15.9	4.72	38.50	1/2	208
36		16.5	4.09	40.80	1/2	218
42		22.4	3.89	47.50	1/2	167

## IPS Flange Adapters (SDR 17 - 130 psi)

Size [inch]	Part No.	H [inch]	T [inch]	Face Dia. [inch]	R (Radius)	Weight [lbs]
2		6.0	0.39	3.94	1/4	1
3		6.0	0.63	5.00	1/4	2
4		6.0	0.54	6.00	3/8	3
5		6.0	0.99	7.50	3/8	5
6		8.0	0.78	8.50	3/8	7
8		11.0	1.00	10.63	3/8	10
10		11.0	1.22	12.75	3/8	18
12		11.0	1.45	15.00	3/8	24
14		11.0	1.60	17.50	1/2	40
16		12.0	1.82	20.00	1/2	60
18		12.0	2.05	21.12	1/2	64
20		12.0	2.27	23.50	1/2	66
22		14.0	2.50	25.60	1/2	68
24		15.0	2.73	28.00	1/2	79
26		15.0	2.96	30.00	1/2	117
28		15.0	3.18	32.30	1/2	129
30		15.0	3.41	34.30	1/2	134
32		15.0	2.35	36.50	1/2	106
34		15.0	3.86	38.50	1/2	135
36		14.0	2.64	40.80	1/2	141
42		21.0	3.09	47.50	1/2	182
48		21.0	3.53	54.00	1/2	244
54		22.4	4.00	60.00	1/2	304

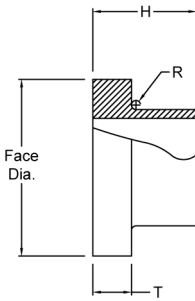


## IPS Flange Adapters (SDR 19 - 110 psi)

Size [inch]	Part No.	H [inch]	T [inch]	Face Dia. [inch]	R (Radius)	Weight [lbs]
3		6.0	0.63	5.00	1/4	2
4		6.0	0.54	6.00	3/8	3
5		6.0	0.99	7.50	3/8	5
6		8.0	0.78	8.50	3/8	7
8		11.0	1.00	10.63	3/8	10
10		11.0	1.22	12.75	3/8	18
12		11.0	1.45	15.00	3/8	24
14		11.0	1.60	17.50	1/2	40
16		12.0	1.82	20.00	1/2	60
18		12.0	2.05	21.12	1/2	64
20		12.0	2.27	23.50	1/2	66
22		14.0	2.50	25.60	1/2	68
24		15.0	2.73	28.00	1/2	79
26		15.0	2.96	30.00	1/2	117
28		15.0	3.18	32.30	1/2	129
30		15.0	3.41	34.30	1/2	134
32		15.0	2.35	36.50	1/2	106
34		15.0	3.86	38.50	1/2	135
36		14.0	2.64	40.80	1/2	141
42		21.0	3.09	47.50	1/2	182
48		21.0	3.53	54.00	3/4	244
54		21.6	4.00	60.00	3/4	304

## IPS Flange Adapters (SDR 21 - 100 psi)

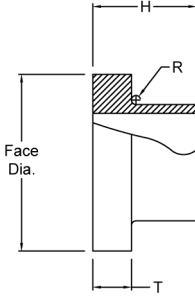
Size [inch]	Part No.	H [inch]	T [inch]	Face Dia. [inch]	R (Radius)	Weight [lbs]
3		6.0	0.63	5.00	1/4	2
4		6.0	0.54	6.00	3/8	3
5		6.0	0.99	7.50	3/8	5
6		8.0	0.78	8.50	3/8	7
8		11.0	1.00	10.63	3/8	10
10		11.0	1.22	12.75	3/8	18
12		11.0	1.45	15.00	3/8	24
14		11.0	1.60	17.50	1/2	40
16		12.0	1.82	20.00	1/2	60
18		12.0	2.05	21.12	1/2	64
20		12.0	2.27	23.50	1/2	66
22		14.0	2.50	25.60	1/2	68
24		15.0	2.73	28.00	1/2	79
26		15.0	2.96	30.00	1/2	117
28		15.0	3.18	32.30	1/2	129
30		15.0	3.41	34.30	1/2	134
32		15.0	2.35	36.50	1/2	106
34		15.0	3.86	38.50	1/2	135
36		14.0	2.64	40.80	1/2	141
42		21.0	2.50	47.50	1/2	152
48		21.0	2.86	54.00	3/4	204
54		21.6	3.21	60.00	3/4	264



## IPS Flange Adapters (SDR 26 - 80 psi)

Size [inch]	Part No.	H [inch]	T [inch]	Face Dia. [inch]	R (Radius)	Weight [lbs]
3		6.0	0.63	5.00	1/4	2
4		6.0	0.54	6.00	3/8	3
5		6.0	0.99	7.50	3/8	5
6		8.0	0.78	8.50	3/8	7
8		11.0	1.00	10.63	3/8	10
10		11.0	1.22	12.75	3/8	18
12		11.0	1.45	15.00	3/8	24
14		11.0	1.60	17.50	1/2	40
16		12.0	1.82	20.00	1/2	60
18		12.0	2.05	21.12	1/2	64
20		12.0	2.27	23.50	1/2	66
22		14.0	2.50	25.60	1/2	68
24		15.0	2.73	28.00	1/2	79
26		15.0	2.96	30.00	1/2	117
28		15.0	3.18	32.30	1/2	129
30		15.0	3.41	34.30	1/2	134
32		15.0	2.35	36.50	1/2	106
34		15.0	3.86	38.50	1/2	135
36		14.0	2.64	40.80	1/2	141
42		21.0	2.50	47.50	1/2	152
48		21.0	2.31	54.00	3/4	170
54		21.0	2.60	60.00	3/4	230

## IPS Flange Adapters (SDR 32.5 - 65 psi)

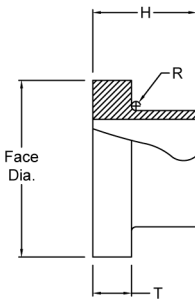


Size [inch]	Part No.	H [inch]	T [inch]	Face Dia. [inch]	R (Radius)	Weight [lbs]
3		6.0	0.63	5.00	1/4	2
4		6.0	0.54	6.00	3/8	3
5		6.0	0.99	7.50	3/8	5
6		8.0	0.78	8.50	3/8	7
8		11.0	1.00	10.63	3/8	10
10		11.0	1.22	12.75	3/8	18
12		11.0	1.45	15.00	3/8	24
14		11.0	1.60	17.50	1/2	40
16		12.0	1.82	20.00	1/2	60
18		12.0	2.05	21.12	1/2	64
20		12.0	2.27	23.50	1/2	66
22		14.0	2.50	25.60	1/2	68
24		15.0	2.73	28.00	1/2	79
26		15.0	2.96	30.00	1/2	117
28		15.0	3.18	32.30	1/2	129
30		15.0	3.41	34.30	1/2	134
32		15.0	2.35	36.50	1/2	106
34		15.0	3.86	38.50	1/2	135
36		14.0	2.64	40.80	1/2	141
42		21.0	2.50	47.50	1/2	152
48		21.0	2.31	54.00	3/4	170
54		21.0	2.60	60.00	3/4	230

### DIPS Flange Adapters (SDR 9 - 250 psi)

Size [inch]	Part No.	H [inch]	T [inch]	Face Dia. [inch]	R (Radius)	Weight [lbs]
4		6.0	0.67	6.63	7/16	4
6		8.0	0.96	8.63	7/16	6
8		9.0	1.26	10.75	7/16	8
10		9.0	1.54	12.75	7/16	13
12		11.0	1.83	15.00	7/16	21
14		11.0	2.13	17.50	7/16	35
16		12.0	2.42	20.00	7/16	43
18		12.0	2.71	21.50	7/16	54
20		12.0	3.00	23.60	7/16	68
24		14.8	3.58	27.80	7/16	99

### DIPS Flange Adapters (SDR 11 - 200 psi)



Size [inch]	Part No.	H [inch]	T [inch]	Face Dia. [inch]	R (Radius)	Weight [lbs]
3		6.0	0.45	5.00	7/16	2
4		6.0	0.55	6.00	7/16	3
6		8.0	0.78	8.50	7/16	4
8		9.0	1.03	10.63	7/16	6
10		9.0	1.26	12.75	7/16	10
12		11.0	1.50	15.00	7/16	17
14		11.0	1.74	17.50	7/16	28
16		12.0	1.98	20.00	7/16	35
18		12.0	2.22	21.12	7/16	46
20		12.0	2.46	23.50	7/16	55
24		14.0	2.93	28.00	7/16	81
30		15.0	3.64	34.30	1/2	134

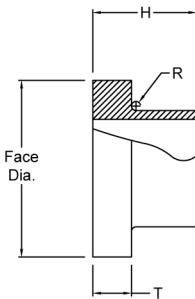
### DIPS Flange Adapters (SDR 17 - 130 psi)

Size [inch]	Part No.	H [inch]	T [inch]	Face Dia. [inch]	R (Radius)	Weight [lbs]
3		6.0	0.45	5.00	7/16	2
4		6.0	0.55	6.00	7/16	3
8		9.0	1.03	10.63	7/16	6
10		9.0	1.26	12.75	7/16	10
12		11.0	1.50	15.00	7/16	17
14		11.0	1.74	17.50	7/16	28
16		12.0	1.98	20.00	7/16	35
18		12.0	2.22	21.12	7/16	46
20		12.0	2.46	23.50	7/16	55
24		13.0	1.90	28.00	7/16	75
30		15.0	3.64	34.30	1/2	134

### DIPS Flange Adapters (SDR 21 - 100 psi)

Size [inch]	Part No.	H [inch]	T [inch]	Face Dia. [inch]	R (Radius)	Weight [lbs]
3		6.0	0.45	5.00	7/16	2
4		6.0	0.55	6.00	7/16	3
8		9.0	1.03	10.63	7/16	6
10		9.0	1.26	12.75	7/16	10
12		11.0	1.50	15.00	7/16	17
14		11.0	1.74	17.50	7/16	28
16		12.0	1.98	20.00	7/16	35
18		12.0	2.22	21.12	7/16	46
20		12.0	2.46	23.50	7/16	55
24		14.0	2.93	28.00	7/16	81
30		15.0	3.64	34.30	1/2	134

### DIPS Flange Adapters (SDR 26 - 80 psi)



Size [inch]	Part No.	H [inch]	T [inch]	Face Dia. [inch]	R (Radius)	Weight [lbs]
3		6.0	0.45	5.00	7/16	2
4		6.0	0.55	6.00	7/16	3
8		9.0	1.03	10.63	7/16	6
10		9.0	1.26	12.75	7/16	10
12		11.0	1.50	15.00	7/16	17
14		11.0	1.74	17.50	7/16	28
16		12.0	1.98	20.00	7/16	35
18		12.0	2.22	21.12	7/16	46
20		12.0	2.46	23.50	7/16	55
24		14.0	2.93	28.00	7/16	81
30		15.0	3.64	34.30	1/2	134

### DIPS Flange Adapters (SDR 32.5 - 65 psi)

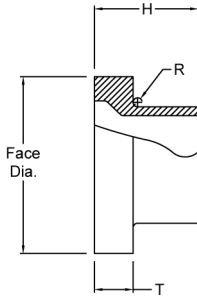
Size [inch]	Part No.	H [inch]	T [inch]	Face Dia. [inch]	R (Radius)	Weight [lbs]
3		6.0	0.45	5.00	7/16	2
4		6.0	0.55	6.00	7/16	3
8		9.0	1.03	10.63	7/16	6
10		9.0	1.26	12.75	7/16	10
12		11.0	1.50	15.00	7/16	17
14		11.0	1.74	17.50	7/16	28
16		12.0	1.98	20.00	7/16	35
18		12.0	2.22	21.12	7/16	46
20		12.0	2.46	23.50	7/16	55
24		14.0	2.93	28.00	7/16	81
30		15.0	3.64	34.30	1/2	134

### IPS Butterfly Valve Flange Adapters (SDR 11)

Size [inch]	Part No.	H [inch]	T [inch]	Face Dia. [inch]	R [Radius]	Weight [lbs]
4		6.50	1.25	6.63	3/8	5
6		8.50	1.50	8.63	3/8	6
8		9.50	1.75	10.75	3/8	8
10		9.50	2.00	12.75	3/8	12
12		11.50	2.25	15.00	3/8	19

### IPS Butterfly Valve Flange Adapters (SDR 17)

Size [inch]	Part No.	H [inch]	T [inch]	Face Dia. [inch]	R [Radius]	Weight [lbs]
4		6.50	1.25	6.63	3/8	5
6		8.50	1.50	8.63	3/8	6
8		9.50	1.75	10.75	3/8	8
10		9.50	2.00	12.75	3/8	12
12		11.50	2.25	15.00	3/8	19



### IPS Butterfly Valve Flange Adapters (SDR 21)

Size [inch]	Part No.	H [inch]	T [inch]	Face Dia. [inch]	R [Radius]	Weight [lbs]
4		6.50	1.25	6.63	3/8	5
6		8.50	1.50	8.63	3/8	6
8		9.50	1.75	10.75	3/8	8
10		9.50	2.00	12.75	3/8	12
12		11.50	2.25	15.00	3/8	19

### IPS Butterfly Valve Flange Adapters (SDR 26)

Size [inch]	Part No.	H [inch]	T [inch]	Face Dia. [inch]	R [Radius]	Weight [lbs]
4		6.50	1.25	6.63	3/8	5
6		8.50	1.50	8.63	3/8	6
8		9.50	1.75	10.75	3/8	8
10		9.50	2.00	12.75	3/8	12
12		11.50	2.25	15.00	3/8	19

### IPS Butterfly Valve Flange Adapters (SDR 32.5)

Size [inch]	Part No.	H [inch]	T [inch]	Face Dia. [inch]	R [Radius]	Weight [lbs]
4		6.50	1.25	6.63	3/8	5
6		8.50	1.50	8.63	3/8	6
8		9.50	1.75	10.75	3/8	8
10		9.50	2.00	12.75	3/8	12
12		11.50	2.25	15.00	3/8	19

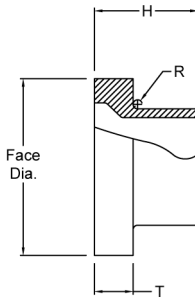


### DIPS Butterfly Valve Flange Adapters (SDR 11)

Size [inch]	Part No.	H [inch]	T [inch]	Face Dia. [inch]	R [Radius]	Weight [lbs]
4		6.50	1.25	6.63	3/8	5
6		8.50	1.50	8.63	3/8	6
8		9.50	1.75	10.75	3/8	8
10		9.50	2.00	12.75	3/8	12
12		11.50	2.25	15.00	3/8	19

### DIPS Butterfly Valve Flange Adapters (SDR 17)

Size [inch]	Part No.	H [inch]	T [inch]	Face Dia. [inch]	R [Radius]	Weight [lbs]
4		6.50	1.25	6.63	3/8	5
6		8.50	1.50	8.63	3/8	6
8		9.50	1.75	10.75	3/8	8
10		9.50	2.00	12.75	3/8	12
12		11.50	2.25	15.00	3/8	19



### DIPS Butterfly Valve Flange Adapters (SDR 21)

Size [inch]	Part No.	H [inch]	T [inch]	Face Dia. [inch]	R [Radius]	Weight [lbs]
4		6.50	1.25	6.63	3/8	5
6		8.50	1.50	8.63	3/8	6
8		9.50	1.75	10.75	3/8	8
10		9.50	2.00	12.75	3/8	12
12		11.50	2.25	15.00	3/8	19

### DIPS Butterfly Valve Flange Adapters (SDR 26)

Size [inch]	Part No.	H [inch]	T [inch]	Face Dia. [inch]	R [Radius]	Weight [lbs]
4		6.50	1.25	6.63	3/8	5
6		8.50	1.50	8.63	3/8	6
8		9.50	1.75	10.75	3/8	8
10		9.50	2.00	12.75	3/8	12
12		11.50	2.25	15.00	3/8	19

### DIPS Butterfly Valve Flange Adapters (SDR 32.5)

Size [inch]	Part No.	H [inch]	T [inch]	Face Dia. [inch]	R [Radius]	Weight [lbs]
4		6.50	1.25	6.63	3/8	5
6		8.50	1.50	8.63	3/8	6
8		9.50	1.75	10.75	3/8	8
10		9.50	2.00	12.75	3/8	12
12		11.50	2.25	15.00	3/8	19