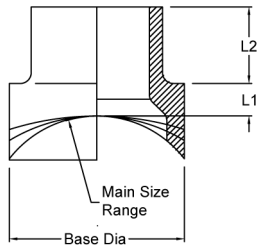


# Fabricated Branch Saddles

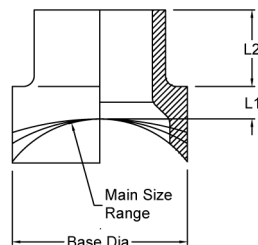
## IPS Branch Saddles



- Blank branch saddles stocked in SDR11.
- Blanks machined per order to radius of main pipe OD; and re-bored to proper SDR.
- Branch saddles can be machined to main sizes up to 63.
- Purchaser must determine that concave/convex heater plate adapters

Outlet Size [inch]	Main Size Range [inch]	Part No.	L1 [inch]	L2 [inch]	Base Diameter [inch]	SDR 11 WPR [psi]	Weight [lbs]
2	3 - 54		3.2	0.2	2.6	200	1
3	4 - 54		3.2	0.5	3.9	200	1
4	6 - 54		3.2	0.5	4.8	200	2
6	8 - 54		3.2	0.7	7.3	200	4
8	10 - 54		6.0	0.7	9.4	200	9
10	12 - 54		6.0	1.0	11.5	200	16
12	14 - 54		8.0	1.0	13.8	200	32

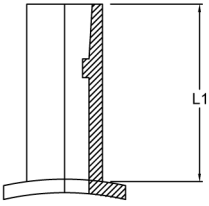
## DIPS Branch Saddles



- Blank branch saddles stocked in SDR11.
- Blanks machined per order to radius of main pipe OD; and re-bored to proper SDR.
- Branch saddles can be machined to main sizes up to 63.
- Purchaser must determine that concave/convex heater plate adapters

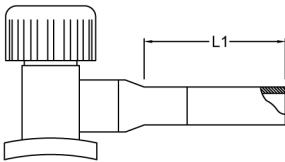
Outlet Size [inch]	Main Size Range [inch]	Part No.	L1 [inch]	L2 [inch]	Base Diameter [inch]	SDR 11 WPR [psi]	Weight [lbs]
2	3 - 54		3.2	0.2	2.6	200	1
3	4 - 54		3.2	0.5	3.9	200	1
4	6 - 54		4.0	1.0	6.6	200	4
6	8 - 54		5.0	1.5	8.6	200	9
8	10 - 54		6.0	1.5	11.5	200	17
10	12 - 54		8.0	2.0	13.8	200	31
12	14 - 54		10.0	2.0	15.3	200	47

## IPS Rectangular Base Service Saddle



Outlet Size [inch]	Part No.	L1 [inch]	Rectangular Base Size	SDR 9	
				WPR [psi]	Weight [lbs]
1-1/4 x 3/4		2.83	2.44 x 2.00	250	0.2
1-1/4 x 1		2.83	2.44 x 2.00	250	0.2
1-1/2 x 3/4		2.83	2.44 x 2.00	250	0.2
1-1/2 x 1		2.83	2.44 x 2.00	250	0.2
2 x 3/4		2.83	2.44 x 2.00	250	0.2
2 x 1		2.83	2.44 x 2.00	250	0.2
2 x 1-1/4		2.06	2.44 x 2.00	250	0.2
3 x 3/4		2.83	2.44 x 2.00	250	0.2
3 x 1		2.83	2.44 x 2.00	250	0.2
3 x 1-1/4		2.06	2.44 x 2.00	250	0.2
4 x 3/4		2.83	2.44 x 2.00	250	0.2
4 x 1		2.83	2.44 x 2.00	250	0.2
4 x 1-1/4		2.06	2.44 x 2.00	250	0.2
6 x 3/4		2.83	2.44 x 2.00	250	0.2
6 x 1		2.83	2.44 x 2.00	250	0.2
6 x 1-1/4		2.06	2.44 x 2.00	250	0.2
8 x 1		2.83	2.44 x 2.00	250	0.1

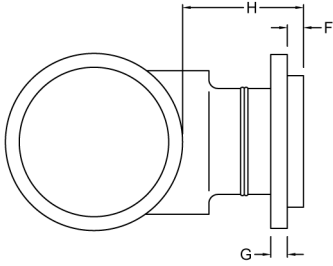
## IPS Rectangular Base Self-Tapping Tees



Outlet Size [inch]	Part No.	L1	Rectangular Base Size	SDR 9	
				WPR [psi]	Weight [lbs]
1-1/4 x 1		3.05	1.91 x 2.50	250	1
1-1/2 x 1		3.05	1.91 x 2.50	250	1
2 x 1		3.05	1.91 x 2.50	250	1
2 x 1-1/4		3.05	1.91 x 2.50	250	1
3 x 1		3.05	1.91 x 2.50	250	1
3 x 1-1/4		3.05	1.91 x 2.50	250	1
4 x 1		3.05	1.91 x 2.50	250	1
4 x 1-1/4		3.05	1.91 x 2.50	250	1
6 x 1		3.05	1.91 x 2.50	250	1
6 x 1-1/4		3.05	1.91 x 2.50	250	1
8 x 1		3.05	1.91 x 2.50	250	1
8 x 1-1/4		3.05	1.91 x 2.50	250	1

## IPS & DIPS Tapping Sleeve / Saddle Assembly

- Full Pressure Rated - MSS SP-60 & AWWA C906 Compliant



Outlet Size [inch]	Main Size Range [inch]	Part No.	G (Ring) [inch]	F (Flg. Face) [inch]	H (Height) [inch]	SDR 11 WPR [psi]
4	6 - 54		0.94	1.00	8.50	160
6	8 - 54		1.00	1.25	8.50	160
8	10 - 54		1.12	1.50	9.00	160
10	12 - 54		1.19	2.00	10.50	160
12	14 - 54		1.50	2.25	10.50	160