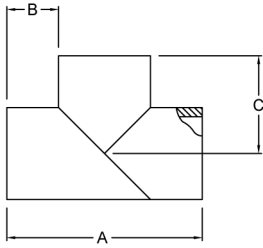


Fabricated Tees

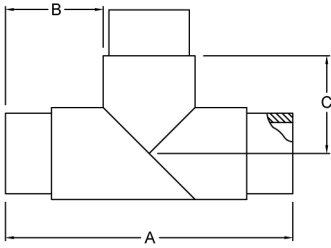
IPS Fabricated Line Tee



Size [inch]	Part No.	A [inch]	B [inch]	C [inch]	SDR 7		SDR9	
					WPR [psi]	Weight [lbs]	WPR [psi]	Weight [lbs]
4		16.5	6.0	8.3	235	8	175	7
6		18.6	6.0	9.3	235	19	175	15
8		24.6	8.0	12.3	235	42	175	34
10		26.8	8.0	13.4	235	70	175	57
12		28.8	8.0	14.4	235	105	175	85
14		32.0	9.0	16.0	235	140	175	112
16		34.0	9.0	17.0	235	204	175	166
18		38.0	10.0	19.0	235	283	175	231
20		40.0	10.0	20.0	235	368	175	297
22		46.0	12.0	23.0	235	506	175	409
24		48.0	12.0	24.0	235	983	175	507
26		54.0	14.0	27.0			175	686
28		56.0	14.0	28.0			175	821
30		58.0	14.0	29.0				
32		60.0	14.0	30.0				
34		74.0	20.0	50.0				
36		76.0	20.0	51.0				
42		82.0	20.0	54.0				
48		88.0	20.0	57.0				
54		94.0	20.0	60.0				

Size [inch]	SDR 11		SDR 17		SDR 21		SDR 26		SDR 32.5	
	WPR [psi]	Weight [lbs]	WPR [psi]	Weight [lbs]	WPR [psi]	Weight [lbs]	WPR [psi]	Weight [lbs]	WPR [psi]	Weight [lbs]
4	140	6								
6	14	13								
8	140	28	90	32						
10	140	46	90	32						
12	140	72	90	48						
14	140	93	90	63						
16	140	137	90	92						
18	11	140	90	131						
20	140	247	90	167						
22	140	343	90	231						
24	140	422	90	286						
26	140	577	90	390						
28	140	689	90	457						
30	140	816	90	552						
32	140	957	90	643						
34	140	1454	90	977						
36	140	1676	90	1128						
42			90	1633	70	1331				
48					70	1736	55	1413		
54							55	2026	45	1628

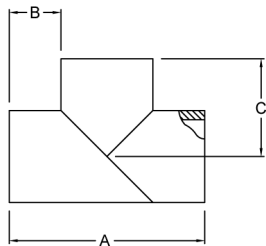
IPS Fabricated Line Tee



- Reinforced
- Fully Pressure Rated with Full Flow ID

Size [inch]	Part No.	A [inch]	B [inch]	C [inch]	SDR 7	SDR 9	SDR 11	SDR 17
					WPR [psi]	WPR [psi]	WPR [psi]	WPR [psi]
4		30.6	10.0	15.3	335	250	200	130
6		36.6	14.0	18.3	335	250	200	130
8		39.8	14.5	19.9	335	250	200	130
10		41.8	14.5	20.9	335	250	200	130
12		48.0	17.0	24.0	335	250	200	130
14		50.0	17.0	25.0	335	250	200	130
16		54.0	18.0	27.0	335	250	200	130
18		56.0	18.0	28.0	335	250	200	130
20		62.0	20.0	31.0	335	250	200	130
22		64.0	20.0	32.0	335	250	200	130
24		70.0	22.0	35.0	335	250	200	130

DIPS Fabricated Line Tee

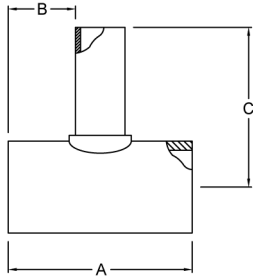


Size [inch]	Part No.	A [inch]	B [inch]	C [inch]	SDR 9		SDR11	
					WPR [psi]	Weight [lbs]	WPR [psi]	Weight [lbs]
4		16.8	6.0	8.4	175	9	140	7
6		18.9	6.0	9.5	175	18	140	15
8		25.0	8.0	12.5	175	37	140	34
10		27.1	8.0	13.6	175	62	140	51
12		29.2	8.0	14.6	175	93	140	78
14		33.3	9.0	16.7	175	50	140	124
16		35.4	9.0	17.7	175	205	140	175
18		39.5	10.0	19.8	175	286	140	236
20		41.6	10.0	20.8	175	359	140	302
24		49.8	12.0	24.9	175	612	140	516
30		60.0	14.0	30.0			140	963

Size [inch]	SDR 17	
	WPR [psi]	Weight [lbs]
4	90	5
6	90	10
8	90	23
10	90	37
12	90	54
14	90	84
16	90	115
18	90	159
20	90	206
24	90	348
30	90	647

IPS Branch Saddle Reducing Tee

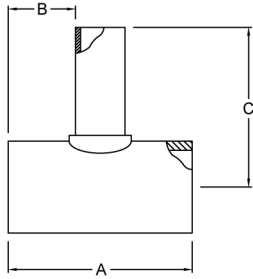
- Fully Pressure Rated



Size [inch]	Part No.	A [inch]	B [inch]	C [inch]	SDR 7 WPR [psi]	SDR 9 WPR [psi]	SDR 11 WPR [psi]	SDR 17 WPR [psi]	SDR21 WPR [psi]
4 x 2		18.0	7.2	11.3	335	250	200	130	
4 x 3		18.0	6.7	12.3	335	250	200	130	
6 x 2		18.0	7.2	13.3	335	250	200	130	
6 x 3		18.0	6.7	13.3	335	250	200	130	
6 x 4		19.0	6.7	13.3	335	250	200	130	
8 x 2		18.0	7.2	13.8	335	250	200	130	
8 x 3		18.0	6.7	14.6	335	250	200	130	
8 x 4		19.0	6.2	14.3	335	250	200	130	
8 x 6		21.0	6.2	14.3	335	250	200	130	
10 x 2		18.0	7.2	14.4	335	250	200	130	
10 x 3		18.0	6.7	15.9	335	250	200	130	
10 x 4		19.0	6.2	15.4	335	250	200	130	
10 x 6		21.0	6.2	15.4	335	250	200	130	
10 x 8		24.0	6.6	24.4	335	250	200	130	
12 x 2		20.0	8.2	15.4	335	250	200	130	
12 x 3		21.0	8.2	16.4	335	250	200	130	
12 x 4		23.0	8.2	16.4	335	250	200	130	
12 x 6		24.0	7.7	16.4	335	250	200	130	
12 x 8		28.0	8.6	25.4	335	250	200	130	
12 x 10		30.0	8.6	26.4	335	250	200	130	
14 x 2		20.0	8.2	16.7	335	250	200	130	
14 x 3		21.0	8.2	17.5	335	250	200	130	
14 x 4		23.0	8.2	17.2	335	250	200	130	
14 x 6		24.0	7.7	17.0	335	250	200	130	
14 x 8		28.0	8.6	26.8	335	250	200	130	
14 x 10		30.0	8.6	27.0	335	250	200	130	
14 x 12		32.0	8.5	29.0	335	250	200	130	
16 x 2		24.0	10.2	17.7	335	250	200	130	
16 x 3		24.0	9.7	18.5	335	250	200	130	
16 x 4		27.0	10.2	18.2	335	250	200	130	80
16 x 6		29.0	10.2	18.0	335	250	200	130	80
16 x 8		32.0	10.6	27.8	335	250	200	130	80
16 x 10		34.0	10.6	28.0	335	250	200	130	80
16 x 12		36.0	10.5	30.0	335	250	200	130	80
18 x 2		24.0	10.2	18.5	335	250	200	130	80
18 x 3		24.0	9.7	19.3	335	250	200	130	80
18 x 4		27.0	10.2	19.0	335	250	200	130	80
18 x 6		29.0	10.2	18.6	335	250	200	130	80
18 x 8		32.0	10.6	28.6	335	250	200	130	80
18 x 10		34.0	10.6	29.0	335	250	200	130	80
18 x 12		36.0	10.5	31.0	335	250	200	130	80

IPS Branch Saddle Reducing Tee (continued)

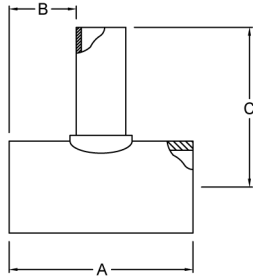
- Fully Pressure Rated



Size [inch]	Part No.	A [inch]	B [inch]	C [inch]	SDR 7 WPR [psi]	SDR 9 WPR [psi]	SDR 11 WPR [psi]	SDR 17 WPR [psi]	SDR21 WPR [psi]
20 x 2		28.0	12.2	19.5	335	250	200	130	80
20 x 3		29.0	12.2	20.3	335	250	200	130	80
20 x 4		31.0	7.2	20.0	335	250	200	130	80
20 x 6		33.0	12.2	19.6	335	250	200	130	80
20 x 8		36.0	12.6	29.6	335	250	200	130	80
20 x 10		38.0	12.6	30.0	335	250	200	130	80
20 x 12		40.0	12.5	32.0	335	250	200	130	80
22 x 2		28.0	12.2	20.5	335	250	200	130	80
22 x 3		29.0	12.2	21.3	335	250	200	130	80
22 x 4		31.0	7.2	21.0	335	250	200	130	80
22 x 6		33.0	12.2	20.6	335	250	200	130	80
22 x 8		36.0	12.6	30.6	335	250	200	130	80
22 x 10		38.0	12.6	31.2	335	250	200	130	80
22 x 12		40.0	12.5	33.0	335	250	200	130	80
24 x 2		28.0	12.2	21.5	335	250	200	130	80
24 x 3		29.0	12.2	22.3	335	250	200	130	80
24 x 4		31.0	7.2	22.0	335	250	200	130	80
24 x 6		33.0	12.2	21.6	335	250	200	130	80
24 x 8		36.0	12.6	31.6	335	250	200	130	80
24 x 10		38.0	12.6	32.2	335	250	200	130	80
24 x 12		40.0	12.5	34.0	335	250	200	130	80

DIPS Branch Saddle Reducing Tee

- Fully Pressure Rated



Size [inch]	Part No.	A [inch]	B [inch]	C [inch]	SDR 9 WPR [psi]	SDR 11 WPR [psi]	SDR 17 WPR [psi]	SDR21 WPR [psi]
6 x 4		19.0	6.2	13.3	250	200	130	
8 x 4		19.0	6.2	14.3	250	200	130	
8 x 6		21.0	6.2	14.3	250	200	130	
10 x 4		19.0	6.2	15.4	250	200	130	
10 x 6		21.0	6.2	15.4	250	200	130	
10 x 8		24.0	6.2	24.4	250	200	130	
12 x 4		23.0	8.2	16.6	250	200	130	
12 x 6		24.0	7.7	16.4	250	200	130	
12 x 8		28.0	8.2	25.4	250	200	130	
12 x 10		30.0	8.6	26.4	250	200	130	
14 x 4		23.0	8.2	17.6	250	200	130	
14 x 6		24.0	7.7	17.0	250	200	130	
14 x 8		28.0	8.2	27.1	250	200	130	
14 x 10		30.0	8.1	27.0	250	200	130	
14 x 12		32.0	8.4	29.0	250	200	130	
16 x 4		28.0	10.2	18.7	250	200	130	80
16 x 6		29.0	10.2	18.0	250	200	130	80
16 x 8		32.0	10.2	28.2	250	200	130	80
16 x 10		34.0	10.1	28.0	250	200	130	80
16 x 12		36.0	10.4	30.0	250	200	130	80
18 x 4		27.0	10.2	19.7	250	200	130	80
18 x 6		29.0	10.2	20.2	250	200	130	80
18 x 8		32.0	10.2	29.2	250	200	130	80
18 x 10		34.0	10.1	29.7	250	200	130	80
18 x 12		36.0	10.4	31.7	250	200	130	80
20 x 4		31.0	12.2	21.3	250	200	130	80
20 x 6		33.0	12.2	21.3	250	200	130	80
20 x 8		36.0	12.2	30.3	250	200	130	80
20 x 10		38.0	12.1	30.8	250	200	130	80
20 x 12		40.0	12.4	32.8	250	200	130	80
24 x 4		31.0	12.2	22.9	250	200	130	80
24 x 6		33.0	12.2	23.4	250	200	130	80
24 x 8		36.0	12.2	32.4	250	200	130	80
24 x 10		38.0	12.1	32.9	250	200	130	80
24 x 12		40.0	12.4	34.9	250	200	130	80

Tapped Tees IPS & DIPS Main Size

Size [inch]	Part No.	L [inch]	SDR 11		SDR17		
			WPR [psi]	Weight [lbs]	WPR [psi]	Weight [lbs]	
4		12.0	200	5			
6		12.0	200	11			
8		12.0	200	15			
10		15.0	200	22			
12		15.0	200	29			
14		18.0	200	44			
16		20.0	200	63			
18		24.0	200	91			
20		24.0	200	111			
24		24.0	200	157			
28 IPS Only		30.0	200	227			
30		30.0	200	294			
36 IPS Only		36.0			130	302	